



Residential Plot for Sale - Prime Location in Perinthalmanna

✔ Property Details:

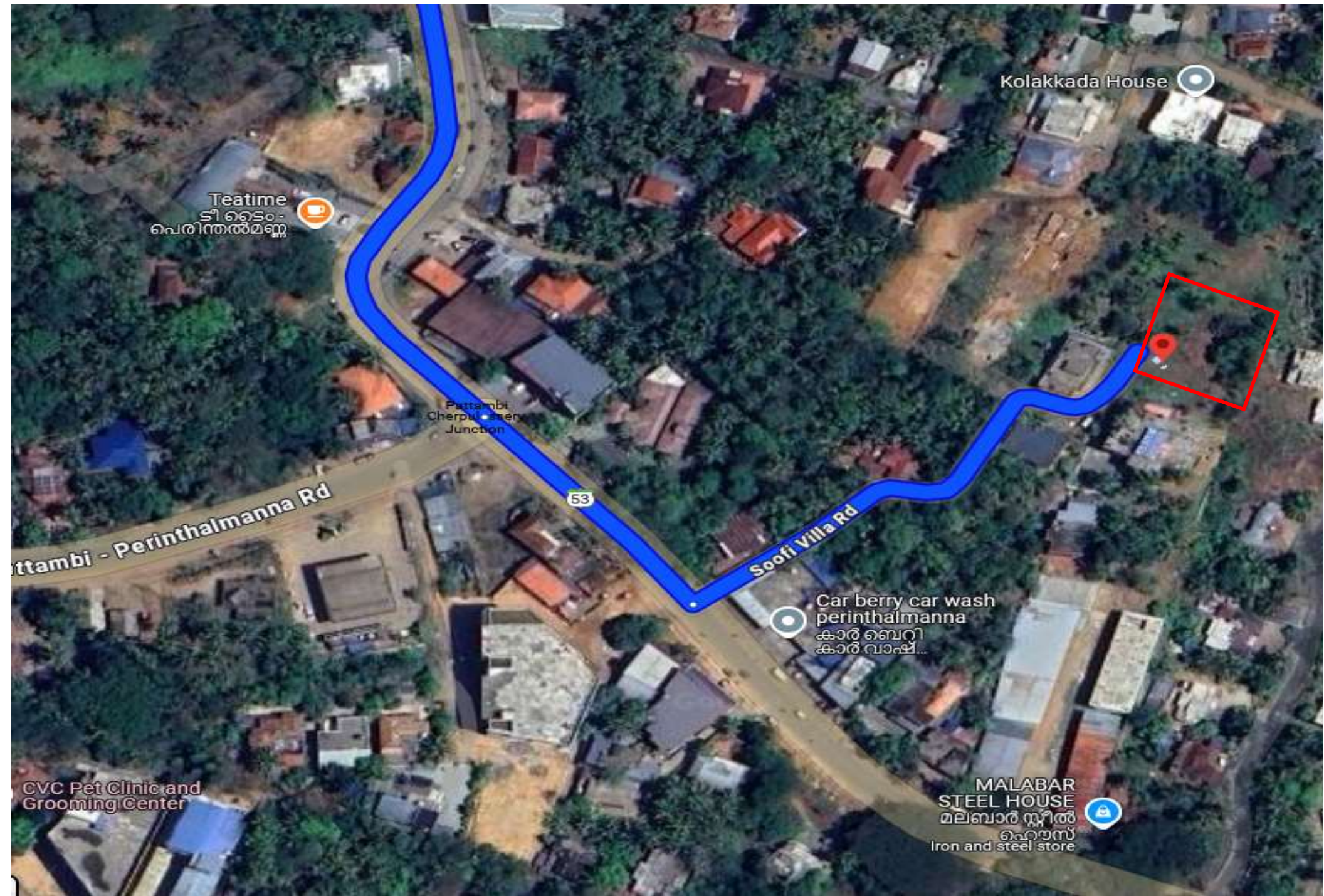
- 📍 **Location:** Just 1.7 km from Perinthalmanna Town
 - 400m from Tea Time
 - 600m from MES School
- 📏 **Plot Size:** 20 cents
- 🏠 **Zoning:** Residential
- 📄 **Ownership:** Freehold with Clear Title
- 🗺️ **Accessibility:** Easy access to the main road, located in a peaceful and well-connected neighborhood
- 💡 **Utilities:** Electricity, water supply, and drainage available

★ Key Highlights:

- Prime residential area close to schools, shops, and amenities
- High resale potential | Ideal for immediate construction
- Legally compliant with all documents in order

💰 Price: Negotiable

📞 For more details, contact: **+91 9037539975**



Teatime
ടീ ടൈം =
ചെരിന്തൽമണ്ണ

Kolakkada House

Pattambi
Cherpulassery
Junction

Pattambi - Perinthalmanna Rd

53

Soofti Villa Rd

Car berry car wash
perinthalmanna
കാർ ബെറി
കാർ വാഷ്...

CVC Pet Clinic and
Grooming Center

MALABAR
STEEL HOUSE
മലബാർ സ്റ്റീൽ
ഹൗസ്
Iron and steel store





